

2024-09-12

# Review of the Current Status on Ruminant Abortigenic Pathogen Surveillance in Africa and Asia

Semango, George

MDPI


---

<https://doi.org/10.3390/vetsci11090425>

*Provided with love from The Nelson Mandela African Institution of Science and Technology*

Review

# Review of the Current Status on Ruminant Abortigenic Pathogen Surveillance in Africa and Asia

George Peter Semango \*  and Joram Buza

School of Life Sciences and Bioengineering, Nelson Mandela African Institution of Science and Technology, Arusha P.O. Box 447, Tanzania

\* Correspondence: george.semango@nm-aist.ac.tz

**Simple Summary:** Abortions in ruminants lead to economic losses to livestock-owning communities. The major causes of these abortions are infectious agents. Surveillance of the infectious agents that cause abortions is important to the overall improvement of livestock productivity. Most LMICs have scarce or inadequate surveillance platforms for these pathogens. In this review article, we have summarized the current status of the available surveillance platforms in place for the infectious agents that lead to abortions in ruminants, as well as the sero-epidemiology of these pathogens.

**Abstract:** Ruminant abortion events cause economic losses. Despite the importance of livestock production for food security and the livelihoods of millions of people in the world's poorest communities, very little is known about the scale, magnitude, or causes of these abortions in Africa and Asia. The aim of this review was to determine the current status of surveillance measures adopted for ruminant abortigenic pathogens in Africa and Asia and to explore feasible surveillance technologies. A systematic literature search was conducted using PRISMA guidelines for studies published between 1 January 1990 and 1 May 2024 that reported epidemiological surveys of abortigenic pathogens Africa and Asia. A meta-analysis was used to estimate the species-specific sero-prevalence of the abortigenic agents and the regions where they were detected. In the systematic literature search, 39 full-text manuscripts were included. The most prevalent abortigenic pathogens with sero-prevalence greater than 10% were BHV-1, *Brucella*, *Chlamydia abortus*, *Neospora caninum*, RVFV, and *Waddlia chondrophila* in cattle, BVDV in sheep, and RVFV and *Toxoplasma gondii* in goats in Africa. In Asia, *Anaplasma*, BHV-1, Bluetongue virus, *Brucella*, and BVDV were prevalent in cattle, whereas *Mycoplasma* was important in goats and sheep.

**Keywords:** livestock; ruminants; abortion; Africa; Asia



**Citation:** Semango, G.P.; Buza, J. Review of the Current Status on Ruminant Abortigenic Pathogen Surveillance in Africa and Asia. *Vet. Sci.* **2024**, *11*, 425. <https://doi.org/10.3390/vetsci11090425>

Academic Editors: Ewa Tomaszewska and Gregory A. Johnson

Received: 4 March 2024

Revised: 14 May 2024

Accepted: 17 May 2024

Published: 12 September 2024



**Copyright:** © 2024 by the authors. Licensee MDPI, Basel, Switzerland. This article is an open access article distributed under the terms and conditions of the Creative Commons Attribution (CC BY) license (<https://creativecommons.org/licenses/by/4.0/>).

## 1. Introduction

Abortion is defined as fetal death and expulsion before completion of the pregnancy period in livestock, and can be caused by microorganism abortigenic agents. These disease agents infect the reproductive organs of the animal, resulting in the defective attachment of the fetus and thus its premature expulsion. Abortigenic agents in livestock include bacterial, protozoan, and viral agents [1]. Abortions may also be caused by other factors, such as genetic disorders, trauma, environmental factors such as temperature, nutritional factors such as phytotoxins, including mycotoxins, as well as iatrogenic factors such as the administration of abortigenic drugs [1]. However, infectious agents are the leading cause of abortion in livestock [2]. Common infectious agents that lead to abortion include *Neospora caninum*, *Brucella* spp., and Rift Valley Fever Virus in cattle, *Coxiella burnetii* in goats and sheep, and pestiviruses in sheep [3–8]. In South Africa, abortigenic agents reported in resource-poor farmers' cattle included *Brucella abortus*, *Neospora caninum*, BVD/MD virus, IBR/IPV, *Trichomonas fetus*, and *Campylobacter fetus* [9].

Abortions in livestock are a major cause of economic losses to farmers worldwide, making it an important phenomenon to monitor and control. The magnitude of the

economic losses has been quantified in some parts of the world for specific pathogens. For example, in South America, the annual losses due to Neosporosis for the dairy industry were estimated to be USD 43.6 million (range, USD 15.62–194.41 million) in Argentina and USD 51.3 million (range, USD 35.8–111.3 million) in Brazil [10,11]. In Tanzania, gross direct economic losses were recently estimated to be USD 263 million [12].

In addition to economic losses, some livestock abortigenic agents are zoonotic making them relevant to human health as well. Some of those infectious agents, including *Brucella abortus*, Rift valley fever, *Toxoplasma gondii*, and *Campylobacter*, among others, can cause fever and abortion in humans.

Developed countries have been successful in the control of some abortigenic agents by devising and implementing surveillance systems. These surveillance systems capture abortion events as quickly and accurately as possible [13]. The implemented surveillance systems include the use of statutory testing, as well as mandatory reporting by farmers of any abortion event to a veterinary inspector by phone, who would then respond and act accordingly by testing and implementing appropriate interventions [13]. (<http://www.gov.scot/Topics/farmingrural/Agriculture/animal-welfare/Diseases/disease/Brucellosis/Surveillance>, accessed on 22 May 2022). The surveillance platforms that have been successfully implemented in developed countries include passive, active, targeted, sentinel, syndromic, reportable disease, abattoirs and slaughter slab, and emerging disease surveillance platforms [13]. These surveillance systems are implemented on a regular basis and, for their successful implementation, are coupled with well-trained and equipped response personnel on the ground and state-of-the-art testing facilities [14].

However, it has been noted that one of the major constraints for the control of abortigenic agents in low- and middle-income countries (LMICs) is the absence of qualitative and quantitative information. This is mainly due to the lack of adequate implementation of surveillance systems for livestock diseases in most African and Asian countries. Currently available disease information is dependent on active disease searching by researchers and includes limited or passive participation by the community. This has led to poor control of disease pathogens, including abortigenic agents, in LMICs, leading to unknown economic losses, as well as a lack of guidance for appropriate interventions. In East Africa as a region, there are ongoing research efforts to unravel the epidemiology of disease pathogens, including abortigenic pathogens. As in other LMICs, East African countries have a high burden of abortigenic agents [3,15–18], but few studies have attempted to estimate the economic losses due to abortions. Currently, the surveillance data collected are not being sufficiently used in rapid response and priority setting in Tanzania [19]. This is mainly because the national surveillance system is not functioning optimally, as in many other LMICs [19–21]. This has thus led to massive underreporting of abortion events in Tanzania, whereby approximately less than 10% of all cases are reported (personal communication). The actual causes of the surveillance system not functioning optimally are also undocumented. Typically, the abortion surveillance system requires the abortion events to be reported to the government by the livestock keepers to the Livestock Field Officers (LFOs), stationed at the village level. From there, it is then reported to the District Veterinary Officer (DVO), who reports to the Zonal Veterinary Centre Director (ZVC). The ZVC then informs the Director of Veterinary Services (DVS) at the Ministry Level. Regular reports of the number of abortion events are then provided to the global platforms at the World Organization for Animal Health (OIE). The system is paper-based from the LFO up to the ZVCs.

Despite the availability of established and successfully implemented surveillance systems in place in certain Northern countries, these may not be directly replicable in many African and Asian countries. Indeed, these systems may not be practical due to their financial, infrastructural, and expert requirements. In India, there is an animal disease surveillance program that is limited to a few diseases, such as *Brucella* and *Leptospira*.

Using a systematic literature review process, we assessed the available literature on studies that reported livestock abortigenic organisms in Africa and Asia. We appreciate

the large heterogeneity between the regions within and between Africa and Asia, but would like to document the distribution of abortigenic pathogens, especially in the wake of the ongoing climate change and its impact on pathogen distribution. Additionally, we determined the surveillance systems that are being used in Africa and Asia in the reporting of livestock abortion events. There is also a wide disparity between the countries within and between Africa and Asia, especially in terms of socio-economic status, but this also shows the importance of the pathogens in these regions. The main objective of this study was to identify the circulating abortigenic pathogens in Africa and Asia through the seroprevalence surveys conducted in these respective countries and also document on the surveillance platforms in place for their monitoring.

## 2. Methods

### 2.1. Study Design and Systematic Review Protocol

References were sought and identified following the Preferred Reporting Items for Systematic Reviews and Meta-Analyses (PRISMA) guidelines [22] (Supplementary Materials, Table S1). Studies were searched in PubMed, Scopus, Embase, and Google Scholar published between 1 January 1990 and 1 May 2024. The search terms are listed in Table 1.

**Table 1.** Literature search strategies.

Search String	Database or Further Sources	Results	Date	Comments
(((ASIA[Text Word]) OR (AFRICA[Text Word]) AND (1990/1/1:2024/5/1[pdat])) AND ((GOATS[Title/Abstract] OR (SHEEP[Title/Abstract]) OR (CATTLE[Title/Abstract] AND (1990/1/1:2024/5/1[pdat]))) AND (ABORT*[Title/Abstract] AND (1990/1/1:2024/5/1[pdat]))) AND (surve*[Title/Abstract])	PubMed	37	1 May 2024	PubMed search
abortion surveillance cattle OR sheep OR goats * * * * "Asia OR Africa" -human -people -persons -man -woman -Europe -americas -australia -pacific -"south america"1990–2024	Google Scholar	240	1 May 2024	Google Scholar search through NM-AIST

### 2.2. Search Strategy

Article titles and abstracts were screened for suitability for inclusion by GS. Full-text articles were included once the abstracts passed the initial screening. They were selected for full-text review if the studies investigated any of the abortigenic pathogens of interest, reported on samples collected from cattle, goats, or sheep, involved surveillance of the abortigenic pathogens, and data collection took place in African or Asian regions or countries as defined by the United Nations (UN) statistics division [23]. Full-text articles were reviewed independently by two authors (GS and JB) to determine if each article met the pre-determined inclusion and exclusion criteria (Supplementary Materials, Table S2). Articles were included for full-text review if the full-text article could be retrieved, if it reported primary data, if the article reported surveillance data in sheep, goats, and sheep, regardless of the laboratory methods used, and if the prevalence of abortigenic pathogens could be calculated from the information available in the paper using any sample type.

### 2.3. Exclusion Criteria

- (i) If the numerator (i.e., number positive) and denominator (i.e., number tested) information were not reported at the species and sample type levels;

- (ii) If they were in a language other than English. When required, a third reviewer (TK) served as a tiebreaker, independently reviewing articles to resolve disagreements between the two primary reviewers.

### 2.4. Article Selection and Data Extraction

From each included article, we extracted information on the species of the affected animal, sample type, the total number of samples tested, and total positive samples. The number of pathogens detected was extracted to determine pathogen prevalence. Sample location data included UN statistics division African and Asian geographic region countries [23]. A formal bias assessment was performed (Supplementary Materials, Table S1), assigning low (L), moderate (M), and high (H) to each potential introduction of bias. The bias elements considered in the formal assessment were related to abortigenic pathogens of interest, studies conducted out of Africa and Asia, and technologies used. An overall assessment of low, moderate, or high risk of bias was assigned to each included article.

### 2.5. Analysis

Prevalence estimates were calculated from pooled data for each pathogen by livestock species and geographic region. Briefly, all the positive cases were summed up as the numerator and all the tested animals were summed up as the denominator, and a pooled sero-prevalence was calculated as a percentage. Summary statistics were calculated in the R program.

## 3. Results

The literature search from the two scientific databases resulted in 297 studies, which included abstracts, free full text, full text, books and documents, clinical trials, and randomized controlled clinical trials including citations. After removing duplicate articles from the searches, 277 articles were available for title and abstract screening. Of these, 57 (20.6%) were identified as potentially relevant and 39 (14.1%) were eligible for inclusion after full-text review (Figure 1). The majority of the studies (18 (46.2%)) were on *Brucella* spp., whereas 9 were on Rift Valley Fever Virus (23.1%), 7 were on *Coxiella burnetii* (17.9%), and 6 each were on *Neospora caninum* and BVDV (15.4%), as summarized in Table 2. The number of studies from each country and the animal species investigated are listed in Table 3.

**Table 2.** Summary of the information extracted from the full-text articles that were included in the meta-analysis.

s/no	Country	Region	Year	Species	Number of Species (Positive)	Pathogen(s) Detected	Study Type	Husbandry Method (Climatic Zone)	Detection Method	Ref
1	Tanzania	East Africa	1996	Cross-bred bulls; Taurine breeds [24] (Friesian, Ayrshire, and Simmental crossed with Tanzanian short-horn zebu, boran, and Sahiwal)	<i>Campylobacter fetus</i> 3/58, <i>Trichomonas foetus</i> 0/58	<i>Campylobacter fetus</i> subsp. <i>Veneralis</i> , <i>Trichomonas foetus</i>	Sero-survey	Smallholder dairy farms (zero-grazing) Tropical climate	Culture and biochemical tests	[24]
2	Uganda	East Africa	2000	Cattle (Ankole, crosses—Fresian and Boran)	<i>Brucella</i> —41/143 <i>Anaplasma</i> 3/454	<i>Brucella</i> , <i>Anaplasma</i>	Cross-sectional	Pastoral communities Tropical climate	RBPT, ELISA	[25]
3	India	Asia	2002–2004	Cattle	35/427 (9.6%)	<i>Neospora caninum</i>	Cross-sectional survey	Dairy farms Tropical climate	ELISA, IFAT	[26]
4	Senegal	West Africa	2003	Sheep	7/260 (2.7%)	RVFEV	Serological survey	Nomadic Tropical climate	Sero neutralization test	[27]
5	Zimbabwe	Southern Africa	2004–2005	Cattle	71/1291 (5.5%)	<i>Brucella</i>	Cross-sectional	Smallholder Subtropical climate	RBT, ELISA	[28]
6	Sudan	Central Africa	2005	Sheep and goats	Sheep 3/270 (1.1%)	RVFEV	Sero-surveillance	Nomadic pastoralist Tropical savannah	ELISA, Hemagglutination	[29]
7	South Africa	Southern Africa	2006–2016	193 cattle, 39 goats, and 57 sheep	63/288; <i>Brucella</i> 21/288 (7.3%) <i>Cattle</i> , <i>Trueperella pyogenes</i> 5/288 <i>Cattle</i> , 1/288 <i>sheep</i>	<i>Brucella</i> , <i>Trueperella pyogenes</i> , <i>E. coli</i> , <i>Salmonella</i> , <i>L. monocytogenes</i> , <i>C. burnetii</i> , <i>B. licheniformis</i> , <i>Rhizopus</i> , <i>B. abortus</i> , <i>Leptospira</i> , <i>C. pecorum</i> , <i>Campylobacter</i>	Observational retrospective study	Archived samples Subtropical and temperate	Microbiology, necropsy, histopathology, PCR	[30]

Table 2. Cont.

s/no	Country	Region	Year	Species	Number of Species (Positive)	Pathogen(s) Detected	Study Type	Husbandry Method (Climatic Zone)	Detection Method	Ref
8	Ethiopia	East Africa	2008–2009	Sheep and goats	0/270 sheep, 2/230 goats	<i>Brucella</i>	Cross-sectional	Mixed farming Tropical	Rose Bengal Plate Test, Complement Fixation Test	[31]
9	Ethiopia	East Africa	2009–2010	Cattle	2/370 (0.05%)	<i>Brucella</i>	Cross-sectional survey	Mixed farming Equatorial rainforest, Afro-alpine	Rose Bengal, Complement Fixation Test	[32]
10	Tunisia	North Africa	2010–2012	Cattle	214 blood, vaginal swabs, milk. <i>Brucella</i> 47/150 (31.3%) RBPT, DANA PCR 46/150 (30.6%). <i>Chlamydia</i> 27/150 (18%), <i>L. monocytogenes</i> 7/150 (4.6%), <i>Salmonella</i> 5/150 (3.3%). Vaginal swabs; <i>Brucella</i> 46/150 (30.6%), <i>Chlamydiales</i> 27/150 (2.65%), <i>L. monocytogenes</i> 4/150 (2.6%)	<i>Brucella</i> , <i>Chlamydiales</i> ( <i>C. abortus</i> , <i>C. pecorum</i> ), <i>Listeria</i> , <i>Salmonella</i> , <i>Coxiella burnetii</i> , <i>Campylobacter</i>	Cross-sectional survey	Limited pasture or tethered Mediterranean climate	PCR, Rose Bengal	[33]
11	Mozambique	Southern Africa	2010–2016	Cattle, goats, and sheep	Cattle 149/404 Goats 45/223 Sheep	RVFV	Sero-survey	Mixed farming Tropical to sub-tropical	ELISA, PRNT	[34]
12	Zimbabwe	Southern Africa	2011	Cattle (mixed breeds)	81/1440 (5.6%)	<i>Brucella</i>	Cross-sectional survey	Smallholder, mixed farming (strictly separate pastures) Subtropical	ELISA	[35]
13	Iran	Asia	2011–2012	Sheep and goats	PCR: Sheep 101/274, Goats 10/25, Culture Sheep 76/274, Goats' 9/25	<i>Mycoplasma</i> spp.	Cross-sectional	Mixed farming Arid and semi-arid climate	PCR, bacterial culture	[36]
14	India	Asia	2012–2014	Cattle	11/61 (18.03%)	<i>Trypanosoma evansi</i>	Sero-survey	Mixed farming. Tropical climate	ELISA	[37]
15	South Korea	Asia	2012–2013	Cattle (Holstein breed)	37/171 and 85/466	Blue Tongue Virus	Serological survey from National Surveillance Program	Mixed farming Temperate climate	ELISA, BTv neutralization test, RT-PCR	[38]
16	Cameroon	West Africa	2013	Cattle	117/1498	RVFV	Cross-sectional survey	Pastoralists Humid and Equatorial climate	ELISA	[39]
17	Tanzania	East Africa	2013–2016	Cattle, goats, and sheep	<i>Brucella</i> Cattle 1/71, <i>Coxiella</i> Goats 5/100, Sheep 1/44, <i>Neospora</i> Cattle 9/71, Goats 1/100, <i>Toxoplasma</i> Sheep 1/44, BHV-1 Cattle 2/49, BVDV Cattle 2/71, Goats 1/100, Sheep 6/44, RVFV Cattle 14/71	<i>Brucella</i> , <i>Chlamydia abortus</i> , <i>Coxiella burnetii</i> , <i>Leptospira hardjo</i> , <i>Neospora caninum</i> , <i>Toxoplasma gondii</i> , Bluetongue Virus, Bovine Herpes Virus 1, Pestiviruses (BVDV/BDV), RVFV	Cross-sectional survey	Pastoral, agro-pastoral, and smallholder Tropical climate	ELISA, PCR	[40]
18	South Africa	Southern Africa	2013–2018	Cattle	359,026 (22.1%)	<i>Brucella</i>	Cross-sectional survey, Provincial surveillance program	Mixed farming Subtropical and temperate	CFT, Rose Bengal Plate Test	[41]
19	Mozambique	Southern Africa	2014	Goats	Serology: 31/127 (24.4%)	RVFV	Outbreak investigation	Mixed farming Tropical to sub-tropical	ELISA, PCR	[42]
20	India	Asia	2014	Cattle	160 RBPT 3/160 (1.8%), Standard Tube Agglutination Test (STAT) 5/160 (3.13%)	<i>Brucella</i>	Sero-epidemiological survey	Mixed farming Tropical climate	RBPT, STAT, Bacterial culture, Milk Ring Test	[43]
21	Nigeria	West Africa	2015	Cattle	11/97 (11.3%)	RVFV	Cross-sectional survey	Nomadic pastoral Tropical monsoon climate, tropical savannah, and Sahelian hot and semi-arid	ELISA	[18]
22	Kenya	East Africa	2016	Cattle	100/955, 10.5%	<i>Coxiella burnetii</i>	Cross-sectional survey	Mixed crop-livestock Tropical climate	ELISA	[4]
23	Egypt	North Africa	2016–2018	Cattle	165/176 (93.86%)	BHV-1	Transboundary, Import from Sudan	Nomadic Subtropical desert climate	ELISA	[44]
24	Tajikistan	Central Asia	2016	Cattle	570 (58 PCR, 12 ELISA)	<i>Brucella</i>	Sero-prevalence	Smallholder Continental, subtropical, desert	ELISA, qPCR, DNA sequencing	[45]
25	Tunisia	North Africa	2017	Cattle and sheep	Cattle <i>Waddlia</i> 12/27, <i>Parachlamydiaceae</i> 8/27, <i>Chlamydiae</i> 7/27, Sheep <i>P. acanthamoebae</i> 9/164, <i>C. pecorum</i> 6/164	<i>Waddlia chondrophila</i> , <i>C. abortus</i> , <i>C. pecorum</i>	Cross-sectional survey	Smallholder Mediterranean	PCR	[46]
26	Algeria	North Africa	2017–2019	Atlas brown cows	650 pregnant (235/36.2%)	<i>Neospora caninum</i>	Sero-prevalence	Smallholder Mediterranean	ELISA	[47]
27	Tanzania	East Africa	2017–2019	Cattle	14/63 (23%)	RVFV	Prospective cohort	Pastoral, agropastoral, and smallholder Tropical climate	ELISA, RT-qPCR	[48]
28	Benin	West Africa	2017	Sheep and goats	Goats 83/153, Sheep 3/215	<i>Toxoplasma gondii</i>	Sero-epidemiological survey	Pastoral. Steppe climate and topical humid climate	ELISA	[15]
29	Guinea	West Africa	2017–2019	Cattle, goats, and sheep	<i>Brucella</i> ; Cattle 52/463, Sheep 2/486, <i>Coxiella</i> ; Cattle 95/463, Goats 18/408, Sheep 11/486. RVF; Cattle 76/463, Goats 4/408, Sheep 5/486	<i>Brucella</i> , <i>Coxiella burnetii</i> , RVFV	Sero-survey from archived samples	Intensive farms Samples from different prefectures Hot and humid	ELISA, Virus Neutralizing Ab	[49]

Table 2. Cont.

s/no	Country	Region	Year	Species	Number of Species (Positive)	Pathogen(s) Detected	Study Type	Husbandry Method (Climatic Zone)	Detection Method	Ref
30	Algeria	North Africa	2018–2019	Cattle	201/460 (43.7%)	Bovine Herpes Virus 1	Abortion investigation	Mixed farming Mediterranean climate	ELISA	[50]
31	Saudi Arabia	Asia	2018–2020	Sheep and goats	Goat 3/84 (3.5%) Serum	BVDV	Sero-prevalence-Abattoir surveillance	Abattoir, semi-closed management Desert climate	ELISA	[51]
32	Ethiopia	East Africa	2018–2019	Cattle cross and pure breeds; Boran–Fresian cross, Boran–Jersey, Pure Jersey, and Boran	BHV-1 68/86(79.1%), BVD 33/86 (38.4%), <i>Neospora</i> 3/86 (3.5%), <i>Coxiella</i> 1/86 (1.2%)	<i>Brucella</i> spp., <i>Neospora caninum</i> , BVD, BHV-1, <i>Coxiella burnetii</i>	Reproductive problem investigation	Semi-intensive farming system (grazing and indoor feeding) Equatorial rainforest, Afro-alpine	ELISA	[52]
33	Ethiopia	East Africa	2018–2019	Cattle (Zebu, Holstein, Fresian, and crossbreed)	0/882 (ear notch samples)	BVDV	Cross-sectional survey	Peri-urban dairy farms, mixed crop–livestock farms (small holder extensive management system), pastoral herds (seasonal mobility) Equatorial rainforest, Afro-alpine	ELISA	[53]
34	India	Asia	2019	Cattle crossbreeds, exotic, and indigenous	BHV-1 425/1004, BVDV 604/1004, <i>Brucella</i> 176/1004, <i>Coxiella</i> 57/1004, <i>Anaplasma</i> 363/1004, <i>Neospora</i> 9/1004	BHV-1, BVDV, <i>Brucella</i> , <i>Coxiella burnetii</i> , <i>Neospora caninum</i> , <i>Anaplasma marginale</i>	Cross-sectional	Intensive dairy farms Tropical	ELISA	[54]
35	Nigeria	West Africa	2020	Cattle	61/1810 (3.37%)	<i>Brucella</i>	Cross-sectional	Mixed farming Tropical monsoon climate, tropical savannah, and Sahelian hot and semi-arid	SAT	[55]
36	Egypt	North Africa	2020	Cattle	<i>Neospora</i> 35/116 (30.17%), BVDV 31/116(26.72%)	<i>Neospora caninum</i> , BVDV	Cross-sectional	Medium-sized farms Subtropical desert climate	ELISA	[56]
37	Kenya	East Africa	2020–2021	Cattle	6593(449)	<i>Brucella</i>	Sero-prevalence	Agro-alpine, high and medium potential, semi-arid, arid, and very arid Tropical climate	ELISA	[57]
38	Bangladesh	Asia	2023	Cattle (local, cross)	66/386 (17.09%)	<i>Brucella</i>	Cross-sectional	Transboundary area, mixed farming Humid, warm climate	RBPT, Plate agglutination test, serum agglutination	[58]
39	South Africa	Southern Africa	2023	Cattle	2% 770	<i>Brucella</i>	Cross-sectional survey, abattoir survey	Communal, commercial, and non-commercial farms Subtropical and temperate	RNT, CFT, Milk Ring Test	[59]

Table 3. Seroprevalence of abortigenic pathogens by species.

Abortigenic Pathogen	Species	Cases (n)		Total Tested (N)		Median Sero-Prevalence	
		Africa	Asia	Africa	Asia	Africa	Asia
<i>Anaplasma</i>	Cattle	3	363	454	1004	0.7	36.2
BHV-1	Cattle	436	245	771	1004	56.5	24.4
Bluetongue virus	Cattle	0	122	0	637	0	19.2
<i>Brucella</i> spp.	Goats	2	0	230	0	0.87	0
	Sheep	2	0	754	0	0.27	0
BVDV	Cattle	80,165	305	372,127	2120	21.5	14.4
	Goats	1	3	100	84	1	3.6
	Sheep	6	0	44	0	13.6	0
<i>Campylobacter</i>	Cattle	66	604	1155	1004	5.7	60.2
	Cattle	3	0	58	0	5.2	0
<i>Chlamydia abortus</i>	Cattle	34	0	177	0	19.2	0
<i>Chlamydia pecorum</i>	Sheep	6	0	164	0	3.7	0
	Goats	23	0	508	0	4.5	0
<i>Coxiella burnetii</i>	Sheep	12	0	530	0	2.3	0
	Cattle	196	54	1504	1004	13	5.4
<i>Listeria</i>	Cattle	7	0	150	0	4.7	0



Table 3. Cont.

Abortigenic Pathogen	Species	Cases (n)		Total Tested (N)		Median Sero-Prevalence	
		Africa	Asia	Africa	Asia	Africa	Asia
<i>Mycoplasma</i>	Goats	0	10	0	25	0	40
	Sheep	0	101	0	274	0	36.9
<i>Neospora caninum</i>	Goats	1	0	100	0	1	0
	Cattle	282	44	923	1431	30.6	3.1
RVFV	Goats	80	0	758	0	10.6	0
	Sheep	15	0	1016	0	1.5	0
	Cattle	381	0	2596	0	14.7	0
<i>Salmonella</i>	Cattle	5	0	150	0	3.3	0
<i>Toxoplasma gondii</i>	Goats	83	0	153	0	54.2	0
	Sheep	4	0	259	0	1.5	0
<i>Trichomonas foetus</i>	Cattle	0	0	58	0	0	0
<i>Trypanosoma evansi</i>	Cattle	0	11	0	61	0	18
<i>Waddlia chondrophila</i>	Cattle	12	0	27	0	44.4	0

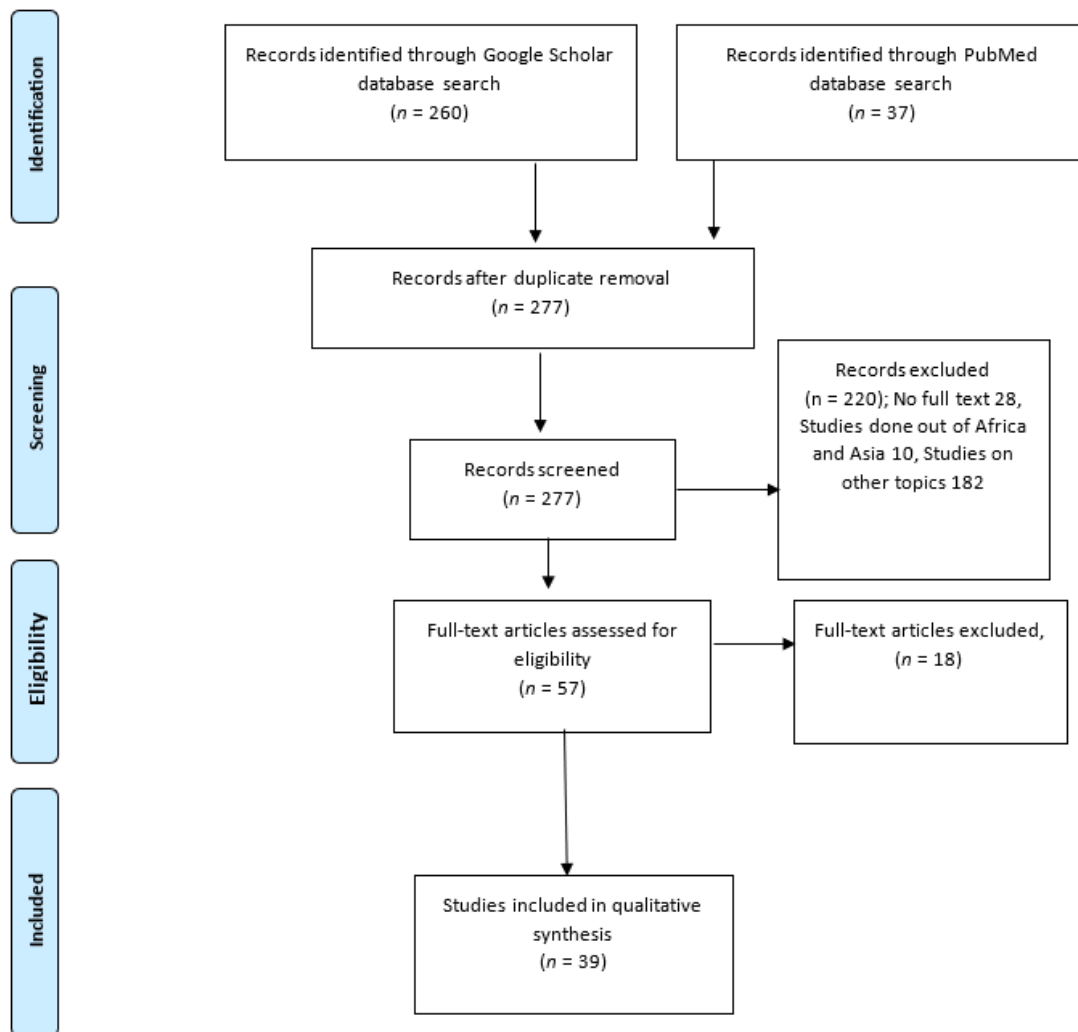


Figure 1. PRISMA flow diagram showing identification, screening, and selection of eligible articles for inclusion in the systematic review, 1990–2002.



Two studies (5.1%) of the thirty-nine included were embedded in the national surveillance programs of the respective countries in which they were conducted, South Korea and South Africa, whereas the majority (94.9%) were stand-alone cross-sectional studies. Most studies (30 (76.9%)) were reported from Africa and 9 (23.1%) were conducted in Asia.

Table 2 shows a summary of the information extracted from the 39 full-text articles included from the literature search in the two databases. We extracted information on the country where the study was conducted, year of publication, species from which samples were collected, the number of positive samples among the total number of samples tested, the pathogen detected, the type of animal husbandry method of the species tested, the type of study, as well as the diagnostic method used.

#### *Median Sero-Prevalence of Abortigenic Pathogens*

The adjusted median prevalence calculations estimated *Brucella* in Africa at 21.5% in 372,127 cattle, and 0.27% and 0.87% in sheep and goats, respectively. *Coxiella* was estimated at 13.0% in cattle, and 2.3% and 4.5% in sheep and goats, respectively. The most prevalent abortigenic pathogens with sero-prevalence greater than 10% were BHV-1, *Brucella*, *Chlamydia abortus*, *Neospora caninum*, RVFV, and *Waddlia chondrophila* in cattle, BVDV in sheep, and RVFV and *Toxoplasma gondii* in goats in Africa. In Asia, *Anaplasma*, BHV-1, Bluetongue virus, *Brucella*, and BVDV were prevalent in cattle, whereas *Mycoplasma* was important in goats and sheep. Other pathogens detected with low sero-prevalence were *Anaplasma*, BVDV, *Campylobacter*, *Listeria*, and *Salmonella* in cattle, *Brucella* and *Coxiella burnetii* in goats and sheep, BVDV and *Neospora caninum* in goats, and *Chlamydia pecorum*, RVFV, and *Toxoplasma gondii* in sheep in Africa. In Asia, pestiviruses (BVDV) were prevalent in goats, and *Coxiella burnetii* and *Neospora caninum* were prevalent in cattle. These data are summarized in Table 3.

#### **4. Discussion**

In this systematic literature search, we found that livestock abortigenic pathogens are still a burden in the livestock sector in African and Asian countries. The most important abortigenic pathogens identified included *Brucella* spp., BHV-1, *Chlamydia* spp., *Neospora caninum*, and *Waddlia chondrophila* in African cattle. RVFV was found to be important in both African cattle and goats. *Toxoplasma gondii* and pestiviruses (BVDV) were important in African goats and sheep, respectively. As for Asia, *Anaplasma*, BHV-1, Bluetongue virus, *Brucella* spp., and BVDV were important in cattle, and *Mycoplasma* was important in sheep. *Brucella*, BHV-1, and pestiviruses were important in both Asia and Africa, while *Anaplasma*, Bluetongue, and *Mycoplasma* were important in Asia only. *Brucella* research in goats and sheep in Asia seems to be minimally conducted, probably because of the ongoing surveillance activities aimed at the pathogen, for instance, in India [20]. Similarly, for *Leptospira*, we could not find a study that detected the pathogen in both Africa and Asia, but it is also under constant surveillance in India [20]. The presence of this surveillance program in India and other parts of Asia may also explain the lack of studies on pathogens such as *Brucella* spp. in goats and sheep. *Brucella* spp. have been reported to be prevalent in India, and our finding of 14.4% sero-prevalence is similar to a recent meta-analysis that reported a pooled sero-prevalence of 16.6% in cattle (O'Donovan & Bersin, 2015) [60]. Anaplasmosis is prevalent in Asia, with different countries reporting different rates of occurrence, such as Iran (37.3%) [61], which is similar to our pooled sero-prevalence. As for Bluetongue virus, which is endemic to Asia and Africa, there is a lack of published data on it in Africa, as also stated elsewhere [62], with very few African countries reporting its occurrence. However, in Asia, BTV has been documented to occur as it is endemic to the region. There are also consortia conducting research on the pathogen, such as the research efforts in Indonesia and Malaysia in collaboration with Australia [63].

It is worth noting that certain pathogens have not been reported at all in Asia in sheep and goats while being present in Africa, such as *Brucella* spp., BVDV, *Chlamydia*, *Coxiella*, *Neospora*, and RVFV. This is unexpected, as the Asia Pacific region hosts over 49% of goats

and 22% of sheep in the world [64]. For RVFV, this virus has not yet been spread to most parts of Asia, which explains the lack of published data from Asia [65]. On the other hand, *Mycoplasma*, *Trypanosoma*, and *Trichomonas* are not as well documented as other pathogens. This may be due to their low sero-prevalence or due to them being neglected as there are other more prevalent pathogens.

Furthermore, surveillance systems for livestock abortigenic pathogens in many African and Asian are so far not optimal, with the exception of a few countries, such as South Africa, India, South Korea, India, and Saudi Arabia which have been reported to have National surveillance programs. The African and Asian regions have the highest rate of growth in surveillance systems using mHealth technology in human medicine. Additionally, most studies employed the serological surveillance approach at single timepoints using a cross-sectional study design. These studies demonstrated the burden of abortigenic pathogens, but were not embedded in the national surveillance systems which would provide continuous real-time information, except for a few Asian countries; namely India, South Korea, Saudi Arabia, and South Africa, which have national *Brucella* surveillance programs.

In the included articles, most studies used serological tests for pathogen detection. These are cheaper and form a good basis for pathogen monitoring programs compared with molecular diagnostic methods and pathogen culture and isolation. For near-real-time surveillance, serological methods are very useful tools [66].

The establishment of effective surveillance systems for zoonotic diseases has been on the research agenda for some time. This is because it is estimated that 75% of human epidemics and 60% of human pathogens are of animal origin. These facts demonstrate the importance of the surveillance of zoonotic pathogens, among which abortigenic agents belong. These abortigenic agents also cause economic losses in instances where they may not have caused disease to a human.

Several different modes of surveillance have been proposed for zoonotic pathogens in different settings of the world, with varying successes. For instance, in France, it is mandatory for livestock keepers to report abortion events to the veterinary department by calling, and failure incurs a fine of EUR 1500 [67]. However, even with advanced response systems in place in France, there are still many keepers who do not report abortions [67].

Participatory systems using mobile phones have been implemented for veterinary surveillance systems in several countries and across a range of diseases. For example, in Cambodia and Madagascar, participatory surveillance systems using mobile phone technologies have been successfully implemented for the surveillance of animal diseases in remote environments [68].

In Tanzania, as in most other African countries, mobile-based technologies have been trialed in both human and veterinary medicine. Mobile phone technology has been applied successfully in zoonotic diseases, like rabies, in some parts of Tanzania [69]. Other veterinary programs whereby mhealth has been used include the innovative Smartphone App (AfyaData) for Innovative One Health Disease Surveillance from Community to National Levels in Africa [70]. This program has highlighted that rural areas have the potential to utilize mobile phones to link livestock keepers with veterinary professionals and provide timely access to information to assist in the diagnosis and treatment of livestock diseases. Furthermore, the availability of mobile phones in rural areas, in combination with supporting infrastructure and facilities in urban areas, has the potential to stimulate local development and improve the delivery of animal health and extension services [71].

In human medicine, mhealth has been applied more extensively and has been more acceptable among health workers than in veterinary disease surveillance [72]. A number of programs are currently ongoing at the national level. These mhealth programs include maternal health and nutrition programs [73] for HIV/ AIDS [72], Malaria [74], and other diseases. Tanzania is reportedly setting the stage at the global level in integrating eHealth as a component of the national health system. Tanzania has established a community of practice working group since 2009 and in 2011 also developed a National mhealth strategy.

The documented major drawbacks of mobile-based technologies include unclear benefits, uncertain long-term results [73,75–79], and unknown cost-effectiveness [73,80]. Furthermore, there are still issues of under-reporting [77,78]. However, even with the drawbacks, mhealth is by far the most promising surveillance method, especially for zoonotic diseases, and especially in Tanzania with the increasing mobile network coverage and mobile phone ownership in both rural and urban areas. Most developing countries where feasibility studies for the application of mhealth and ehealth have been conducted have reported that most mhealth programs are implemented in silos without the involvement of key stakeholders and hence unsustainability of the mhealth programs [81,82]

We believe that our review has some major strengths in terms of outlining the abortigenic pathogens in ruminants that are found in Africa and Asia; however, our manuscript has limitations in that we were limited to a few databases and also may have not explored all factors and variables that may influence pathogen distribution. However, these were not the immediate objectives of this review.

## 5. Conclusions

In conclusion, livestock abortigenic pathogens are prevalent in many African and Asian countries. Adequate near-real-time surveillance systems for livestock abortigenic pathogens in many African and Asian countries are not present, except for a few countries, such as India, South Africa, South Korea, and Saudi Arabia, which have surveillance programs.

**Supplementary Materials:** The following supporting information can be downloaded at: <https://www.mdpi.com/article/10.3390/vetsci11090425/s1>, Table S1: Criteria list fulltext; Table S2: Criteria list title/abstract.

**Author Contributions:** Conception: G.P.S. and J.B.; Design of the work: G.P.S. and J.B.; Data acquisition: G.P.S. and J.B. Data interpretation: G.P.S. and J.B.; Manuscript draft: G.P.S.; Manuscript review: J.B.; Final approval: G.P.S. and J.B. All authors have read and agreed to the published version of the manuscript.

**Funding:** This study was funded in whole by Science for Africa Foundation to the Developing Excellence in Leadership, Training and Science in Africa (DELTA Africa) programme [Afrique One-ASPIRE, Del-15-008 and Afrique One-REACH, Del-22-011] with support from Wellcome Trust and the UK Foreign, Commonwealth & Development Office and is part of the EDCPT2 programme supported by the European Union. For purposes of open access, the author has applied a CC BY public copyright licence to any Author Accepted Manuscript version arising from this submission.

**Institutional Review Board Statement:** Not applicable.

**Informed Consent Statement:** Not applicable.

**Data Availability Statement:** Dataset available on request from the authors.

**Acknowledgments:** We would like to acknowledge Tito Kibona (TK) for serving as a tiebreaker, independently reviewing articles to resolve disagreement between the two primary reviewers.

**Conflicts of Interest:** The authors declare no conflicts of interest.

## References

1. Tibary, A. Abortion in Cattle—Reproductive System. Available online: <https://www.msdevetmanual.com/reproductive-system/abortion-in-large-animals/abortion-in-cattle> (accessed on 12 October 2021).
2. Givens, M.D. A Clinical, Evidence-Based Approach to Infectious Causes of Infertility in Beef Cattle. *Theriogenology* **2006**, *66*, 648–654. [[CrossRef](#)] [[PubMed](#)]
3. Semango, G.; Hamilton, C.M.; Kreppel, K.; Katzer, F.; Kibona, T.; Lankester, F.; Allan, K.J.; Thomas, K.M.; Claxton, J.R.; Innes, E.A.; et al. The Sero-Epidemiology of Neospora Caninum in Cattle in Northern Tanzania. *Front. Vet. Sci.* **2019**, *6*, 327. [[CrossRef](#)] [[PubMed](#)]
4. Wardrop, N.A.; Thomas, L.F.; Cook, E.A.J.; de Glanville, W.A.; Atkinson, P.M.; Wamae, C.N.; Fèvre, E.M. The Sero-Epidemiology of Coxiella Burnetii in Humans and Cattle, Western Kenya: Evidence from a Cross-Sectional Study. *PLoS Neglected Trop. Dis.* **2016**, *10*, e0005032. [[CrossRef](#)] [[PubMed](#)]

5. Madzingira, O.; Fasina, F.O.; Kandiwa, E.; Musilika-Shilongo, A.; Chitate, F.; van Heerden, H. A Retrospective Sero-Epidemiological Survey of Bovine Brucellosis on Commercial and Communal Farming Systems in Namibia from 2004 to 2018. *Trop Anim Health Prod* **2020**, *52*, 3099–3107. [[CrossRef](#)]
6. Oyas, H.; Holmstrom, L.; Kemunto, N.P.; Muturi, M.; Mwatondo, A.; Osoro, E.; Bitek, A.; Bett, B.; Githinji, J.W.; Thumbi, S.M.; et al. Enhanced Surveillance for Rift Valley Fever in Livestock during El Niño Rains and Threat of RVF Outbreak, Kenya, 2015–2016. *PLoS Neglected Trop. Dis.* **2018**, *12*, e0006353. [[CrossRef](#)]
7. Kim, H.J.; Park, J.-Y.; Jeoung, H.-Y.; Yeh, J.-Y.; Cho, Y.-S.; Choi, J.-S.; Lee, J.-Y.; Cho, I.-S.; Yoo, H.-S. Serological Surveillance Studies Confirm the Rift Valley Fever Virus Free Status in South Korea. *Trop. Anim. Health Prod.* **2015**, *47*, 1427–1430. [[CrossRef](#)]
8. Esubalew, S.; Tarekegn, Z.S.Z.; Jemberu, W.T.; Nigatu, S.D.; Kussa, M.; Tsegaye, A.A.; Asteraye, G.B.; Bogale, B.; Kebede, M.C. Seroepidemiology of Toxoplasma Gondii in Small Ruminants in Northwest Ethiopia. *Vet. Parasitol. Reg. Stud. Rep.* **2020**, *22*, 100456. [[CrossRef](#)]
9. Njiro, S.M.; Kidanemariam, A.G.; Tsotetsi, A.M.; Katsande, T.C.; Mnisi, M.; Lubisi, B.A.; Potts, A.D.; Baloyi, F.; Moyo, G.; Mpfu, J.; et al. A Study of Some Infectious Causes of Reproductive Disorders in Cattle Owned by Resource-Poor Farmers in Gauteng Province, South Africa. *J. S. Afr. Vet. Assoc.* **2011**, *82*, 213–218. [[CrossRef](#)]
10. Moore, D.; Reichel, M.; Spath, E.; Campero, C. Neospora Caninum Causes Severe Economic Losses in Cattle in the Humid Pampa Region of Argentina. *Trop. Anim. Health Prod.* **2013**, *45*, 1237–1241. [[CrossRef](#)]
11. Nicolino, R.R.; Capanema, R.O.; de Oliveira, C.S.F.; Pastrana, M.E.O.; Lopes, L.B.; Haddad, J.P.A. Estimating the Abortion Risk Difference in Neospora Caninum Seropositive Dairy Cattle in Brazil. *Ciência Rural* **2015**, *45*, 1629–1633. [[CrossRef](#)]
12. Semango, G.; Yoder, J.; Kibona, T.; Claxton, J.R.; Buza, J.; Mmbaga, B.T.; Johnson, S.S.; Cleaveland, S.; Lankester, F. Economic Burden of Livestock Abortions in Northern Tanzania. *J. Agric. Appl. Econ.* **2024**, *56*, 195–215. [[CrossRef](#)]
13. Berezowski, J. Veterinary Surveillance. *EOLSS* **2002**, *6*, 153.
14. OIE Animal Health Surveillance. Available online: [https://www.woah.org/fileadmin/Home/eng/Health\\_standards/tahc/curent/chapitre\\_surveillance\\_general.pdf](https://www.woah.org/fileadmin/Home/eng/Health_standards/tahc/curent/chapitre_surveillance_general.pdf) (accessed on 18 May 2024).
15. Tonouhewa, A.B.N.; Akpo, Y.; Sherasiya, A.; Sessou, P.; Adinci, J.M.; Aplogan, G.L.; Youssao, I.; Assogba, M.N.; Farougou, S. A Serological Survey of Toxoplasma Gondii Infection in Sheep and Goat from Benin, West-Africa. *J. Parasit. Dis.* **2019**, *43*, 343–349. [[CrossRef](#)] [[PubMed](#)]
16. Hesterberg, U.W.; Bagnall, R.; Perrett, K.; Bosch, B.; Horner, R.; Gummow, B. A Serological Prevalence Survey of Brucella Abortus in Cattle of Rural Communities in the Province of KwaZulu-Natal, South Africa. *J. S. Afr. Vet. Assoc.* **2008**, *79*, 15–18. [[CrossRef](#)] [[PubMed](#)]
17. Gomo, C.; de Garine-Wichatitsky, M.; Caron, A.; Pfukenyi, D.M. Survey of Brucellosis at the Wildlife-Livestock Interface on the Zimbabwean Side of the Great Limpopo Transfrontier Conservation Area. *Trop. Anim. Health Prod.* **2012**, *44*, 77–85. [[CrossRef](#)] [[PubMed](#)]
18. Alhaji, N.B.; Babalobi, O.O.; Wungak, Y.; Ularanu, H.G. Participatory Survey of Rift Valley Fever in Nomadic Pastoral Communities of North-Central Nigeria: The Associated Risk Pathways and Factors. *PLoS Neglected Trop. Dis.* **2018**, *12*, e0006858. [[CrossRef](#)] [[PubMed](#)]
19. George, J.; Häslar, B.; Komba, E.; Sindato, C.; Rweyemamu, M.; Mlangwa, J. Towards an Integrated Animal Health Surveillance System in Tanzania: Making Better Use of Existing and Potential Data Sources for Early Warning Surveillance. *BMC Vet. Res.* **2021**, *17*, 109. [[CrossRef](#)] [[PubMed](#)]
20. Chethan Kumar, H.B.; Hiremath, J.; Yogisharadhya, R.; Balamurugan, V.; Jacob, S.S.; Manjunatha Reddy, G.B.; Suresh, K.P.; Shome, R.; Nagalingam, M.; Sridevi, R.; et al. Animal Disease Surveillance: Its Importance & Present Status in India. *Indian J. Med. Res.* **2021**, *153*, 299–310. [[CrossRef](#)] [[PubMed](#)]
21. Namayanja, J.; Dione, M.; Kungu, J.M. Stakeholders’ Perceptions on Performance of the Livestock Disease Surveillance System in Uganda: A Case of Pallisa and Kumi Districts. *Pastoralism* **2019**, *9*, 12. [[CrossRef](#)]
22. Moher, D.; Liberati, A.; Tetzlaff, J.; Altman, D.G. Preferred Reporting Items for Systematic Reviews and Meta-Analyses: The PRISMA Statement. *BMJ* **2009**, *339*, b2535. [[CrossRef](#)]
23. UN Statistics Division. Available online: <https://unstats.un.org/home/> (accessed on 20 August 2021).
24. Swai, E.S.; Hulsebosch, J.; Van der Heijden, W. Prevalence of Genital Campylobacteriosis and Trichomonosis in Crossbred Breeding Bulls Kept on Zero-Grazed Smallholder Dairy Farms in the Tanga Region of Tanzania. *J. S. Afr. Vet. Assoc.* **2005**, *76*, 224–227. [[CrossRef](#)] [[PubMed](#)]
25. Otim, C.P.; Ocaido, M.; Okuna, N.M.; Erume, J.; Ssekitto, C.; Wafula, R.Z.O.; Kakaire, D.; Walubengo, J.; Okello, A.; Mugisha, A. Disease and Vector Constraints Affecting Cattle Production in Pastoral Communities of Sembabule District, Uganda. *Livest. Res. Rural. Dev.* **2004**, *16*, 1–5.
26. Sandhu, K.S.; Ball, M.S.; Kumar, H.; Sharma, S.; Sidhu, P.K.; Sreekumar, C.; Dubey, J.P. Seroprevalence of Neospora Caninum Antibodies in Cattle and Water Buffaloes in India. *J. Parasitol.* **2007**, *93*, 1374–1377.
27. Chevalier, V.; Thiongane, Y.; Etter, E.; Lancelot, R. *Serological Follow up of Rift Valley Fever in a Sahelian Ecosystem 2004*; CIRAD: Paris, France, 2007.
28. Matope, G.; Bhebhe, E.; Muma, J.B.; Lund, A.; Skjerve, E. Risk Factors for Brucella Spp. Infection in Smallholder Household Herds. *Epidemiol. Infect.* **2011**, *139*, 157–164. [[CrossRef](#)]



29. Kroc, J.M.; Ochi, E.B. Short-Communication: Sero-Survey of Anti Rift Valley Fever Virus (RVFV) Antibodies in Sheep and Goats in Kapoeta, Eastern Equatoria State, Sudan. *Sudan J. Vet. Res.* **2009**, *24*, 65–67.
30. Jonker, A.; Michel, A. Retrospective Study of Bacterial and Fungal Causes of Abortion in Domestic Ruminants in Northern Regions of South Africa (2006–2016). *Aust. Vet. J.* **2021**, *99*, 66–71. [[CrossRef](#)]
31. Ferede, Y.; Mengesha, D.; Mekonen, G. Study on the Seroprevalence of Small Ruminant Brucellosis in and around Bahir Dar, North West Ethiopia. *Ethiop. Vet. J.* **2011**, *15*, 2. [[CrossRef](#)]
32. Degefa, T.; Duressa, A.; Duguma, R. Brucellosis and Some Reproductive Problems of Indigenous Arsi Cattle in Selected Arsi Zone's of Oromia Regional State, Ethiopia. *Glob. Vet.* **2011**, *7*, 45–53.
33. Barkallah, M.; Gharbi, Y.; Hassena, A.B.; Slima, A.B.; Mallek, Z.; Gautier, M.; Greub, G.; Gdoura, R.; Fendri, I. Survey of Infectious Etiologies of Bovine Abortion during Mid- to Late Gestation in Dairy Herds. *PLoS ONE* **2014**, *9*, e91549. [[CrossRef](#)]
34. Moiane, B.T. *Rift Valley Fever in Mozambique*; Swedish University of Agricultural Sciences: Uppsala, Sweden, 2017.
35. Matope, G.; Bhebhe, E.; Muma, J.B.; Oloya, J.; Madekurozwa, R.L.; Lund, A.; Skjerve, E. Seroprevalence of Brucellosis and Its Associated Risk Factors in Cattle from Smallholder Dairy Farms in Zimbabwe. *Trop. Anim. Health Prod.* **2011**, *43*, 975–982. [[CrossRef](#)]
36. Jafarizadeh, A.; Pournabksh, S.A.; Tadayon, K.; Jamshidian, M.; Ashtari, A. Mixed Infection Zones May Be Important in the Epidemiology of Contagious Agalactia. *J. Vet. Res.* **2016**, *60*, 159–162. [[CrossRef](#)]
37. Ligi, J.; Sengupta, P.P.; Rudramurthy, G.R.; Rahman, H. A Pilot Sero-Survey for Surra in Livestock in Karnataka by ELISA Using Flagellar Antigen of *Trypanosoma Evansi*. *Int. J. Fundam. Appl. Sci.* **2015**, *4*, 99–103.
38. Hwang, J.-M.; Kim, J.G.; Yeh, J.-Y. Serological Evidence of Bluetongue Virus Infection and Serotype Distribution in Dairy Cattle in South Korea. *BMC Vet. Res.* **2019**, *15*, 255. [[CrossRef](#)]
39. Bronsvort, B.M.; Kelly, R.F.; Freeman, E.; Callaby, R.; Bagninbom, J.M.; Ndip, L.; Handel, I.G.; Tanya, V.N.; Morgan, K.L.; Ngwa, V.N.; et al. A Cross-Sectional, Population-Based, Seroepidemiological Study of Rift Valley Fever in Cameroonian Cattle Populations. *Front. Vet. Sci.* **2022**, *9*, 897481. [[CrossRef](#)] [[PubMed](#)]
40. Thomas, K.M.; Kibona, T.; Claxton, J.R.; de Glanville, W.A.; Lankester, F.; Amani, N.; Buza, J.J.; Carter, R.W.; Chapman, G.E.; Crump, J.A.; et al. Prospective Cohort Study Reveals Unexpected Aetiologies of Livestock Abortion in Northern Tanzania. *Sci. Rep.* **2022**, *12*, 11669. [[CrossRef](#)]
41. Govindasamy, K.; Etter, E.M.C.; Geertsma, P.; Thompson, P.N. Progressive Area Elimination of Bovine Brucellosis, 2013–2018, in Gauteng Province, South Africa: Evaluation Using Laboratory Test Reports. *Pathogens* **2021**, *10*, 1595. [[CrossRef](#)]
42. Fafetine, J.M.; Coetzee, P.; Mubemba, B.; Nhambirre, O.; Neves, L.; Coetzer, J.A.W.; Venter, E.H. Rift Valley Fever Outbreak in Livestock, Mozambique, 2014. *Emerg. Infect. Dis.* **2016**, *22*, 2165–2167. [[CrossRef](#)]
43. Khajuria, B.K.; Malik, M.A.; Tiwari, A.; Sharma, N.; Wazir, V.S. Seroprevalence Studies of Brucellosis at Organized and Unorganized Cattle Farms in North India. *Int. J. Agric. Environ. Biotechnol.* **2014**, *7*, 499. [[CrossRef](#)]
44. Hekal, S.H.A.; Al-Gaabary, M.H.; El-Sayed, M.M.; Sobhy, H.M.; Fayed, A.A.A. Seroprevalence of Some Infectious Transboundary Diseases in Cattle Imported from Sudan to Egypt. *J. Adv. Vet. Anim. Res.* **2019**, *6*, 92. [[CrossRef](#)]
45. Lindahl-Rajala, E.; Hoffman, T.; Fretin, D.; Godfroid, J.; Sattorov, N.; Boqvist, S.; Lundkvist, Å.; Magnusson, U. Detection and Characterization of *Brucella* Spp. in Bovine Milk in Small-Scale Urban and Peri-Urban Farming in Tajikistan. *PLoS Neglected Trop. Dis.* **2017**, *11*, e0005367. [[CrossRef](#)]
46. Barkallah, M.; Jribi, H.; Ben Slima, A.; Gharbi, Y.; Mallek, Z.; Gautier, M.; Fendri, I.; Gdoura, R. Molecular Prevalence of Chlamydia and Chlamydia-like Bacteria in Tunisian Domestic Ruminant Farms and Their Influencing Risk Factors. *Transbound. Emerg. Dis.* **2018**, *65*, e329–e338. [[CrossRef](#)]
47. Abdeltif, B.; Tennah, S.; Derdour, S.Y.; Temim, A.; Boufendi, H.; Ghalmi, F. The First Study on Seroprevalence and Risk Factors of *Neospora Caninum* Infection in Pregnant Local Cows from Northeast Algeria. *Vet. World* **2022**, *15*, 442–448. [[CrossRef](#)]
48. De Glanville, W.A.; Allan, K.J.; Nyarobi, J.M.; Thomas, K.M.; Lankester, F.; Kibona, T.J.; Claxton, J.R.; Brennan, B.; Carter, R.W.; Crump, J.A.; et al. An Outbreak of Rift Valley Fever among Peri-Urban Dairy Cattle in Northern Tanzania. *Trans. R. Soc. Trop. Med. Hyg.* **2022**, *116*, 1082–1090. [[CrossRef](#)]
49. Troupin, C.; Ellis, I.; Doukouré, B.; Camara, A.; Keita, M.; Kagbadouno, M.; Bart, J.-M.; Diallo, R.; Lacôte, S.; Marianneau, P.; et al. Seroprevalence of Brucellosis, Q Fever and Rift Valley Fever in Domestic Ruminants in Guinea in 2017–2019. *BMC Vet. Res.* **2022**, *18*, 64. [[CrossRef](#)]
50. Djellata, N. Seroprevalence of Infectious Bovine Rhinotracheitis in Aborted Cows in Algeria. *Vet. Stanica* **2024**, *55*, 311. [[CrossRef](#)]
51. Al-Mubarak, A.I.A.; Hussen, J.; Kandeel, M.; Al-Kubati, A.A.G.; Falemban, B.; Skeikh, A.; Hemida, M.G. Risk-Associated Factors Associated with the Bovine Viral Diarrhea Virus in Dromedary Camels, Sheep, and Goats in Abattoir Surveillance and Semi-Closed Herd System. *Vet. World* **2022**, *15*, 1924–1931. [[CrossRef](#)]
52. Messele, Y.E.; Girmay, G.; Emeru, B.A.; Bora, S.K.; Gudeta, W.F.; Dersso, B.S.; Tegegne, D.T.; Hurrissa, B.U.; Yalew, S.T.; Werid, G.M. *Seroprevalence of Major Infectious Causes of Dairy Cattle Reproductive Problems in Central Ethiopia*; Research Square: Durham, NC, USA, 2021.
53. Yitagesu, E.; Jackson, W.; Kebede, N.; Smith, W.; Fentie, T. Prevalence of Bovine Abortion, Calf Mortality, and Bovine Viral Diarrhea Virus (BVDV) Persistently Infected Calves among Pastoral, Peri-Urban, and Mixed-Crop Livestock Farms in Central and Northwest Ethiopia. *BMC Vet. Res.* **2021**, *17*, 87. [[CrossRef](#)]

54. Naveena, T.; Sarangi, L.N.; Rana, S.K.; Prasad, A.; Prabha, T.S.; Jhansi, D.; Ponnanna, N.M.; Sharma, G.K. Seroprevalence to Common Infectious Abortifacient and Infertility Causing Agents in the Dairy Herds of India. *Iran J. Vet. Res.* **2022**, *23*, 189–195.
55. Mohammed, F.U.; Ibrahim, S.; Musa, G.A.; Kaltungo, B.Y.; Danbirni, S.; Kwaga, J.K. Brucella Infection in Migratory Cattle Herds in Jigawa State Nigeria: A Cross Sectional Study. *Sokoto J. Vet. Sci.* **2020**, *18*, 191–194. [[CrossRef](#)]
56. El-Mohamady, R.; Gerges, A.M.; Abd-Elhafeiz, Y.G.M. Investigation of The Association Between Bovine Viral Diarrhea Virus and Neospora Caninum as a Cause of Abortion in Cattle. *J. Appl. Vet. Sci.* **2021**, *7*, 11–17. [[CrossRef](#)]
57. Akoko, J.M.; Mwatondo, A.; Muturi, M.; Wambua, L.; Abkallo, H.M.; Nyamota, R.; Bosire, C.; Oloo, S.; Limbaso, K.S.; Gakuya, F.; et al. Mapping Brucellosis Risk in Kenya and Its Implications for Control Strategies in Sub-Saharan Africa. *Sci. Rep.* **2023**, *13*, 20192. [[CrossRef](#)] [[PubMed](#)]
58. Deb Nath, N.; Ahmed, S.S.U.; Malakar, V.; Hussain, T.; Chandra Deb, L.; Paul, S. Sero-Prevalence and Risk Factors Associated with Brucellosis in Dairy Cattle of Sylhet District, Bangladesh: A Cross-Sectional Study. *Vet. Med. Sci.* **2023**, *9*, 1349–1358. [[CrossRef](#)] [[PubMed](#)]
59. Marumo, B.; Hlokwe, T.M.; Kayoka-Kabongo, P.N. Seroprevalence of Brucellosis in Communal and Smallholder Cattle Farming in North West Province, South Africa. *Onderstepoort J. Vet. Res.* **2023**, *90*, 2114. [[CrossRef](#)]
60. Jaismon, P.A.; Sushmitha, A.P.; Verma, M.R.; Singh, Y.P.; Borthakur, U.; Kumar, S.; Sharun, K.; Dhama, K. Prevalence of Bovine Brucellosis in India: A Meta-Analysis. *Vet. Q.* **2023**, *43*, 1–9. [[CrossRef](#)]
61. Mohammadian, B.; Noaman, V.; Emami, S.J. Molecular Survey on Prevalence and Risk Factors of Anaplasma Spp. Infection in Cattle and Sheep in West of Iran. *Trop. Anim. Health Prod.* **2021**, *53*, 266. [[CrossRef](#)]
62. Chambaro, H.M.; Sasaki, M.; Simulundu, E.; Silwamba, I.; Sinkala, Y.; Gonzalez, G.; Squarre, D.; Fandamu, P.; Lubaba, C.H.; Munyeme, M.; et al. Co-Circulation of Multiple Serotypes of Bluetongue Virus in Zambia. *Viruses* **2020**, *12*, 963. [[CrossRef](#)]
63. Daniels, P.W.; Sendow, I.; Pritchard, L.I.; Eaton, B.T. Regional Overview of Bluetongue Viruses in South-East Asia: Viruses, Vectors and Surveillance. *Vet. Ital.* **2004**, *40*, 94–100.
64. FAO Animal Genetic Resources. Strategies for Improved Use and Conservation. Available online: <https://www.fao.org/3/ah806e/AH806E12.htm> (accessed on 17 April 2024).
65. Rahman, M.M.; Islam, M.R.; Dhar, P.S. Recent Re-Emergence of Rift Valley Fever: Epidemiology, Clinical Characteristics, Transmission, Symptoms, Diagnosis, Prevention, and Treatment. *Int. J. Surg.* **2023**, *109*, 117. [[CrossRef](#)]
66. FAO Manual on Livestock Disease Surveillance and Information Systems. Available online: <https://www.fao.org/3/x3331e/x3331e01.htm> (accessed on 22 October 2021).
67. Bronner, A.; Hénaux, V.; Fortané, N.; Hendriks, P.; Calavas, D. Why Do Farmers and Veterinarians Not Report All Bovine Abortions, as Requested by the Clinical Brucellosis Surveillance System in France? *BMC Vet. Res.* **2014**, *10*, 93. [[CrossRef](#)]
68. Goutardab, F.L.; Binotab, A.; Dubozac, R.; Rasamoelina-Andriamanivode, H.; Pedronoae, M.; Hollf, D.; Peyreag, M.I.; Cappelleah, J.; Chevaliera, V.; Figuiéi, M.; et al. How to Reach the Poor? Surveillance in Low-Income Countries, Lessons from Experiences in Cambodia and Madagascar. *Prev. Vet. Med.* **2015**, *120*, 12–26. [[CrossRef](#)]
69. Mtema, Z.; Changalucha, J.; Cleaveland, S.; Elias, M.; Ferguson, H.M.; Halliday, J.E.B.; Haydon, D.T.; Jaswant, G.; Kazwala, R.; Killeen, G.F.; et al. Mobile Phones as Surveillance Tools: Implementing and Evaluating a Large-Scale Intersectoral Surveillance System for Rabies in Tanzania. *PLOS Med.* **2016**, *13*, e1002002. [[CrossRef](#)]
70. Karimuribo, E.D.; Mutagahywa, E.; Sindato, C.; Mboera, L.; Mwabukusi, M.; Kariuki Njenga, M.; Teesdale, S.; Olsen, J.; Rweyemamu, M. A Smartphone App (AfyaData) for Innovative One Health Disease Surveillance from Community to National Levels in Africa: Intervention in Disease Surveillance. *JMIR Public Health Surveill* **2017**, *3*, e94. [[CrossRef](#)] [[PubMed](#)]
71. Karimuribo, E.; Batamuzi, E.; Massawe, L.; Silayo, R.; Mgongo, F.; Kimbita, E.; Wambura, R. Potential Use of Mobile Phones in Improving Animal Health Service Delivery in Underserved Rural Areas: Experience from Kilosa and Gairo Districts in Tanzania. *BMC Vet. Res.* **2016**, *12*, 1–6. [[CrossRef](#)] [[PubMed](#)]
72. Thomas, D.S.; Daly, K.; Nyanza, E.C.; Ngallaba, S.E.; Bull, S. Health Worker Acceptability of an mHealth Platform to Facilitate the Prevention of Mother-to-Child Transmission of HIV in Tanzania. *Digit. Health* **2020**, *6*, 2055207620905409. [[CrossRef](#)] [[PubMed](#)]
73. L'Engle, K.L.; Vahdat, H.L.; Ndakidemi, E.; Lasway, C.; Zan, T. Evaluating Feasibility, Reach and Potential Impact of a Text Message Family Planning Information Service in Tanzania. *Contraception* **2013**, *87*, 251–256. [[CrossRef](#)] [[PubMed](#)]
74. Francis, F.; Ishengoma, D.S.; Mmbando, B.P.; Rutta, A.S.M.; Malecela, M.N.; Mayala, B.; Lemnge, M.M.; Michael, E. Deployment and Use of Mobile Phone Technology for Real-Time Reporting of Fever Cases and Malaria Treatment Failure in Areas of Declining Malaria Transmission in Muheza District North-Eastern Tanzania. *Malar. J.* **2017**, *16*, 308. [[CrossRef](#)]
75. Haberer, J.E.; Kiwanuka, J.; Nansera, D.; Wilson, I.B.; Bangsberg, D.R. Challenges in Using Mobile Phones for Collection of Antiretroviral Therapy Adherence Data in a Resource-Limited Setting. *AIDS Behav.* **2010**, *14*, 1294–1301. [[CrossRef](#)] [[PubMed](#)]
76. Wakadha, H.; Chandir, S.; Were, E.V.; Rubin, A.; Obor, D.; Levine, O.S.; Gibson, D.G.; Odhiambo, F.; Laserson, K.F.; Feikin, D.R. The Feasibility of Using Mobile-Phone Based SMS Reminders and Conditional Cash Transfers to Improve Timely Immunization in Rural Kenya. *Vaccine* **2013**, *31*, 987–993. [[CrossRef](#)]
77. Chang, L.W.; Kagaayi, J.; Arem, H.; Nakigozi, G.; Ssempijja, V.; Serwadda, D.; Quinn, T.C.; Gray, R.H.; Bollinger, R.C.; Reynolds, S.J. Impact of a mHealth Intervention for Peer Health Workers on AIDS Care in Rural Uganda: A Mixed Methods Evaluation of a Cluster-Randomized Trial. *AIDS Behav.* **2011**, *15*, 1776–1784. [[CrossRef](#)]

78. Githinji, S.; Kigen, S.; Memusi, D.; Nyandigisi, A.; Mbithi, A.M.; Wamari, A.; Muturi, A.N.; Jagoe, G.; Barrington, J.; Snow, R.W.; et al. Reducing Stock-Outs of Life Saving Malaria Commodities Using Mobile Phone Text-Messaging: SMS for Life Study in Kenya. *PLoS ONE* **2013**, *8*, e54066. [[CrossRef](#)]
79. Leon, N.; Schneider, H.; Daviaud, E. Applying a Framework for Assessing the Health System Challenges to Scaling up mHealth in South Africa. *BMC Med. Inf. Decis. Mak.* **2012**, *12*, 123. [[CrossRef](#)] [[PubMed](#)]
80. Horvath, T.; Azman, H.; Kennedy, G.E.; Rutherford, G.W. Mobile Phone Text Messaging for Promoting Adherence to Antiretroviral Therapy in Patients with HIV Infection. *Cochrane Database Syst. Rev.* **2012**, *2012*, CD009756. [[CrossRef](#)] [[PubMed](#)]
81. Njoroge, M.; Zurovac, D.; Ogara, E.A.A.; Chuma, J.; Kirigia, D. Assessing the Feasibility of eHealth and mHealth: A Systematic Review and Analysis of Initiatives Implemented in Kenya. *BMC Res. Notes* **2017**, *10*, 90. [[CrossRef](#)] [[PubMed](#)]
82. Kiberu, V.M.; Mars, M.; Scott, R.E. Barriers and Opportunities to Implementation of Sustainable E-Health Programmes in Uganda: A Literature Review. *Afr. J. Prim. Health Care Fam. Med.* **2017**, *9*, 10. [[CrossRef](#)] [[PubMed](#)]

**Disclaimer/Publisher’s Note:** The statements, opinions and data contained in all publications are solely those of the individual author(s) and contributor(s) and not of MDPI and/or the editor(s). MDPI and/or the editor(s) disclaim responsibility for any injury to people or property resulting from any ideas, methods, instructions or products referred to in the content.